



Push
SALICE

ENG



Push
Self-opening system
for handle-less doors

Mechanical Push
Retaining catches for wooden doors page 6
Retaining catches for aluminium-frame doors page 10
Adapters page 11
Spacers and insertion tool for retaining catch page 12
Assembly instructions and drillings page 13
page 14

Magnetic Push
Adapters page 18
Magnetic release device and retaining catch application page 19
Adjustable magnetic retaining catch application page 20
page 23



Series 200

Technical features page 26
94° opening for thicker doors page 28
110° opening page 30
155° opening for thicker doors page 32
Complementary hinges:
for wooden doors with positive angled assembly page 34
crampon hinges page 36



For metal profiles

Series 200
105° opening page 40
Complementary hinges page 41
Crampon hinges page 42



Series B
Hinges that need to be bonded to glass

For glass doors
Technical features page 44
110° opening page 45

Series B
Hinges for doors with a minimum thickness of 8 mm

Doors made with special materials
Technical features page 46
110° opening page 47

Series B
Hinges for half-inset doors or doors with moulded profiles

For wooden doors
Technical features page 48
110° opening page 50



Accessories

Screw cover caps page 54
Flange cover caps page 54
Spacer for Series 200 hinges page 54
Stop devices page 55

Mechanical Push



Mechanical Push

The PUSH-System is a self-opening system for the doors of all types of handleless furniture.

It consists of a series of self-opening hinges, release devices that can be fitted to the top, base or side panel of the cabinet, and retaining catches to be fitted to the back of the door.

The retaining catches can be pressure-fixed or screw-fixed.

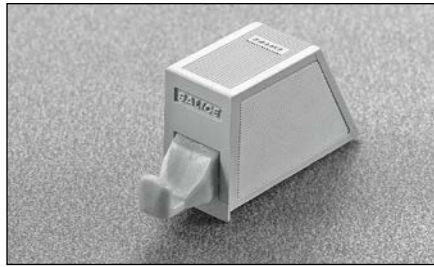
For doors over 1600 mm in height, we suggest that you use two mechanical release catches.



DP1SNB - beige



DP1SNG - grey



With assembly stop device.

Packing
Boxes 300 pcs.

Installation of mechanical Push with adhesive strip

For correct application and to ensure optimal endurance, please follow the following procedure:

- 1)** clean and degrease the cabinet surface where the release device is to be installed using an acetone based cleaner;
- 2)** remove the protective strip from the adhesive;
- 3)** place the release device in position and apply a firm pressure for about one minute;
- 4)** allow a period of 12 hours to elapse before subjecting the PUSH-System to continuous usage.



Mechanical Push - To be screw-fixed

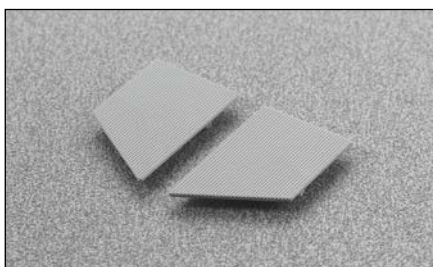
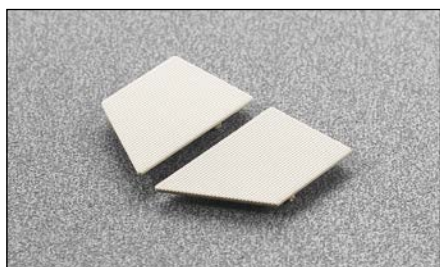
DP3SNB - beige



DP3SNG - grey



With assembly stop device.



Packing
Boxes 300 pcs.

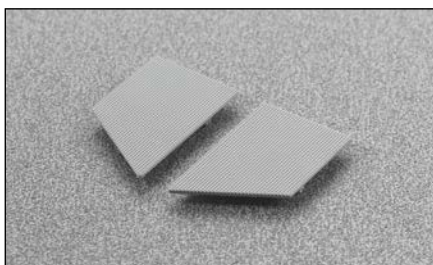
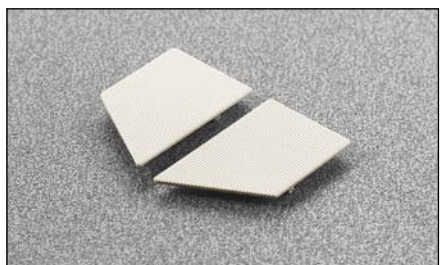
DP3SNBR - beige



DP3SNGR - grey



Without assembly stop device.

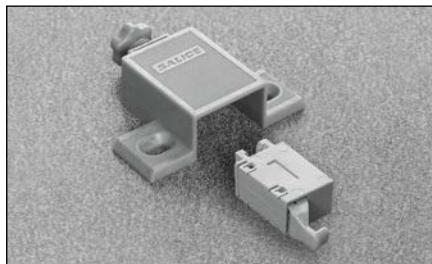


Packing
Boxes 300 pcs.

DP4SNB - beige



DP4SNG - grey

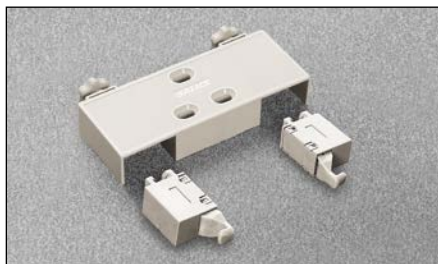


Single adapter with depth and sideways adjustment and release device. Without assembly stop device.

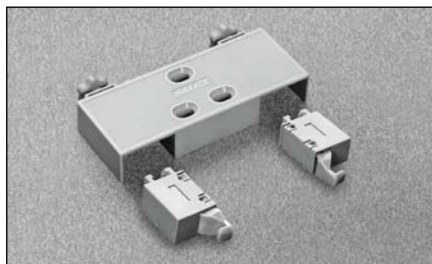
Packing

Boxes 300 pcs.

DP5SNB - beige



DP5SNG - grey



Double adapter with depth and sideways adjustment and release devices. Without assembly stop device.

Packing

Boxes 150 pcs.

N.B.: Drilling patterns at page 14.

Technical information on the adjustable mechanical Push

The adjustable Push consists of a release device and a screw-fixed adapter which have been developed to improve the locating action of the system.

The adjustable Push now has a depth adjustment facility with a range of -1 mm to + 2.5 mm which is controlled by a small adjuster wheel located at the back of the adapter.

In addition, the adapter has a sideways adjustment facility of ± 2 mm. This is achieved by loosening the two fixing screws and adjusting the position of the adapter using the elongated holes. Finally, the screws must be retightened.



Mechanical Push - Retaining catches for wooden doors

DP29SNB - beige



DP29SNG - grey



Retaining catch for wooden door.
Knock-in.

Packing

Boxes 300 pcs.

DP29SNBMC - beige



DP29SNGMC - grey



Retaining catch for wooden door and special
assemblies.
Knock-in.

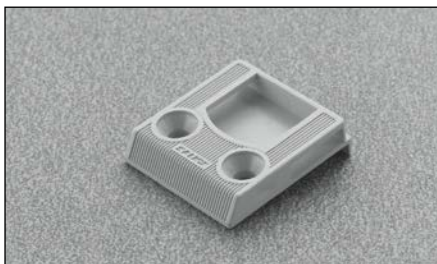
Packing

Boxes 300 pcs.

DP29SNBI - beige



DP29SNGI - grey



Retaining catch for wooden door.
With assembly stop device.
Screw-on.

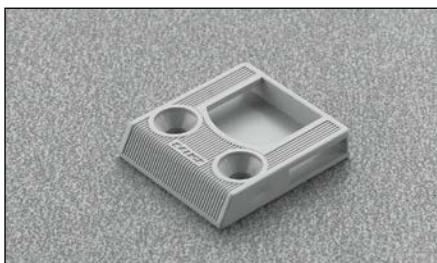
Packing

Boxes 300 pcs.

DP29SNBR - beige



DP29SNGR - grey



Retaining catch for wooden door.
Without assembly stop device.
Screw-on.

Packing

Boxes 300 pcs.

N.B.: Drilling patterns at page 15.



DP29SNBA - beige



DP29SNGA - grey



Retaining catch for aluminium-frame door
width = 35 - 45 mm.

Packing

Boxes 300 pcs.

DP29SNBB - beige



DP29SNGB grey



Retaining catch for aluminium-frame door
width = 17 - 35 mm.

Packing

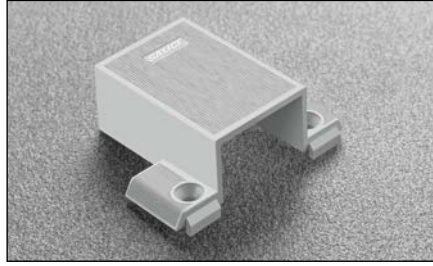
Boxes 300 pcs.

N.B.: Drilling patterns at pages 16

DP52SNB - beige



DP52SNG - grey



Single adapter.
6x40 mm drilling.
With assembly stop device.
DP53SN_ = single adapter with sideways adjustment.

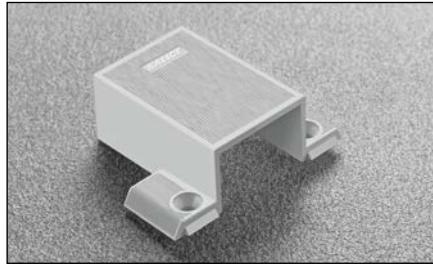
Packing

Boxes 300 pcs.

DP52SNBR - beige



DP52SNGR - grey



Single adapter.
6x40 mm drilling.
Without assembly stop device.
DP53SN_R = single adapter with sideways adjustment.

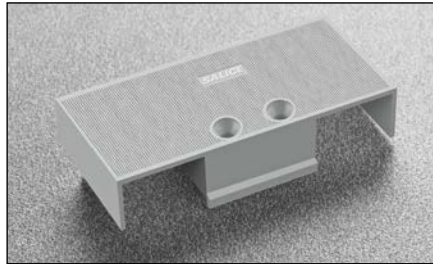
Packing

Boxes 300 pcs.

DP54SNB - beige



DP54SNG - grey



Double adapter.
6x16 mm drilling.
With assembly stop device.

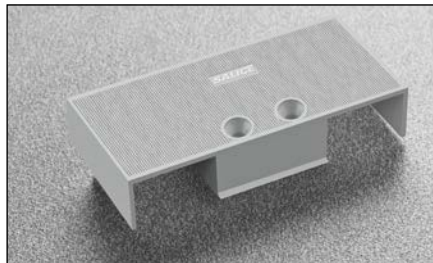
Packing

Boxes 150 pcs.

DP54SNBR - beige



DP54SNGR - grey

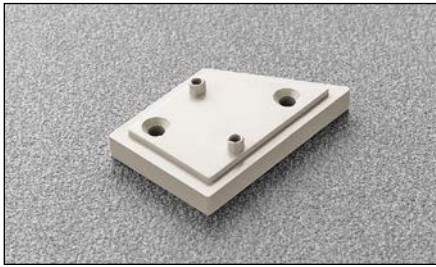


Double adapter.
6x16 mm drilling.
Without assembly stop device.

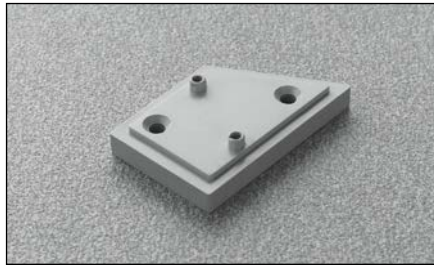
Packing

Boxes 150 pcs.

DP44XXBD - beige



DP44XXGD - grey

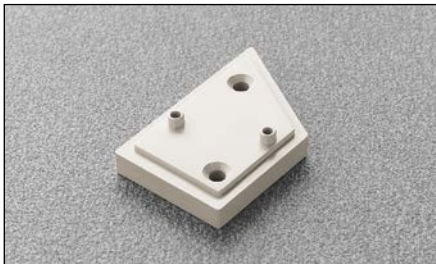


Right spacer H = 4.8 mm.

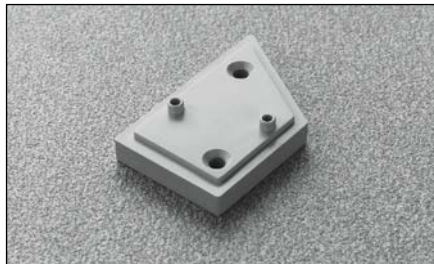
Packing

Boxes 300 pcs.

DP44XXBS - beige



DP44XXGS - grey



Left spacer H = 4.8 mm.

Packing

Boxes 300 pcs.

DP50SN0

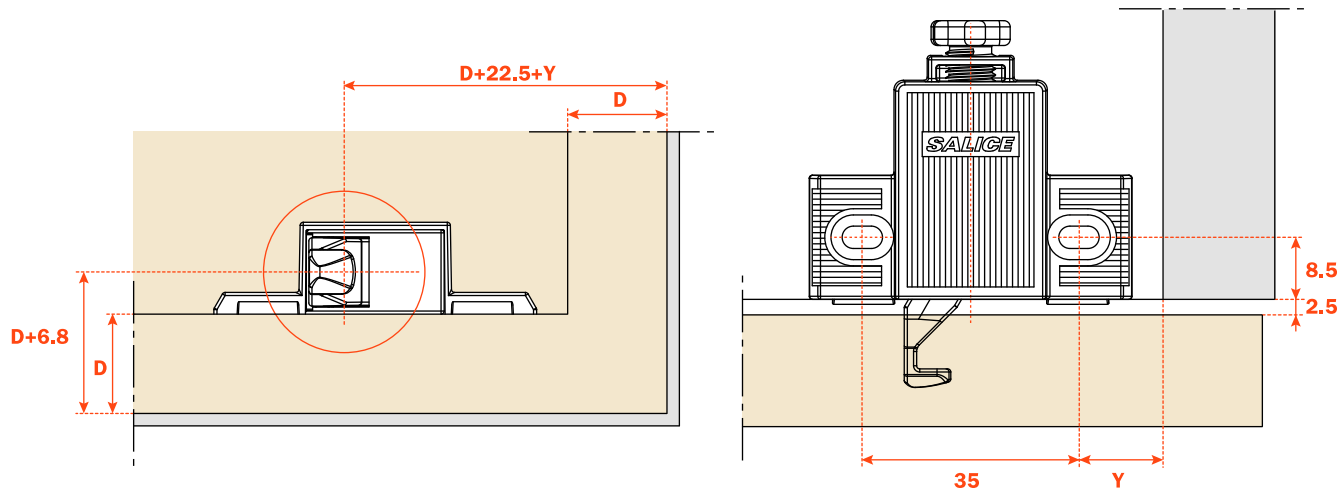


Orange insertion tool for retaining catch DP29SN_.



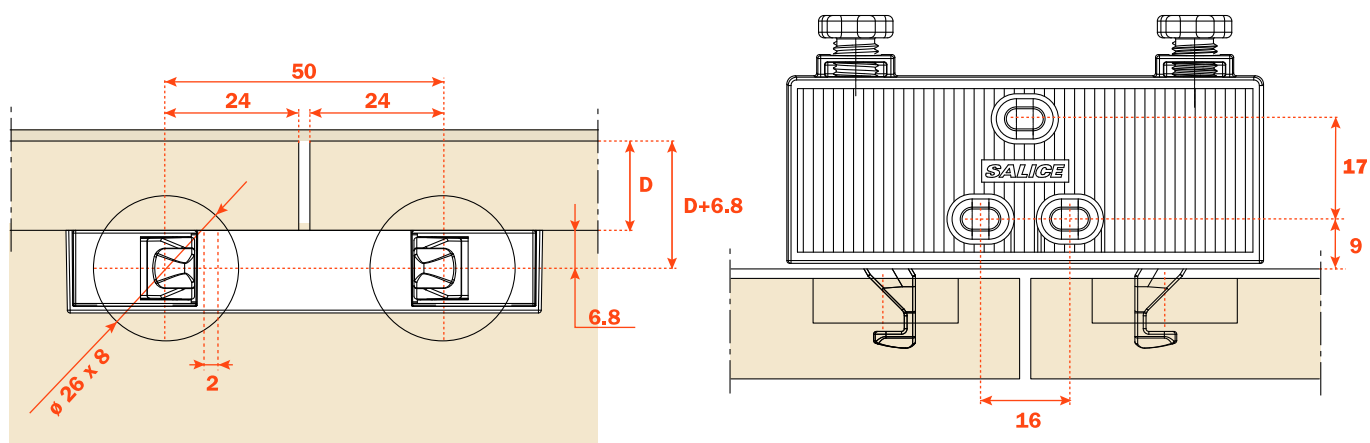
Mechanical Push - With adjustment

Push with depth and sideways adjustment

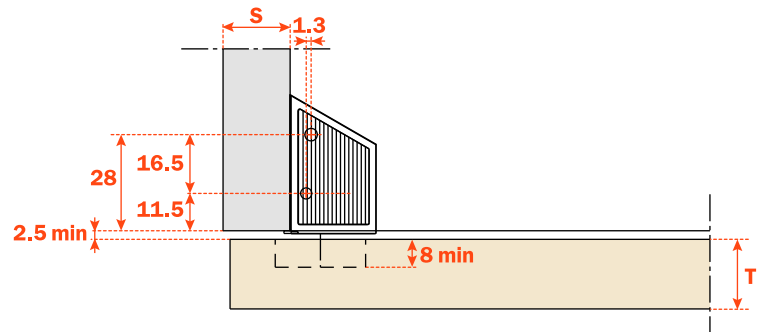
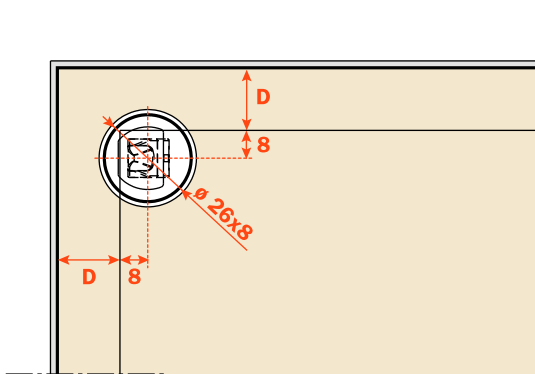


D = Door overlay on side and top of the cabinet
Y = min. 8.5 mm

Double Push with depth and sideways adjustment



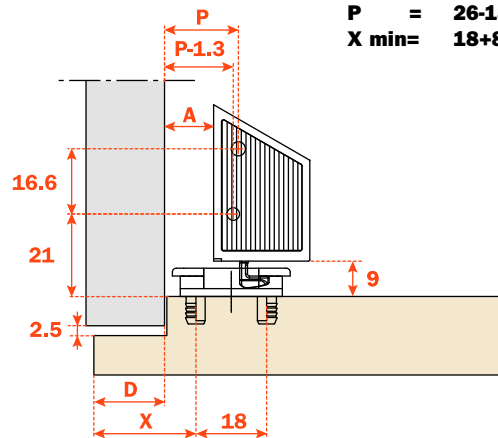
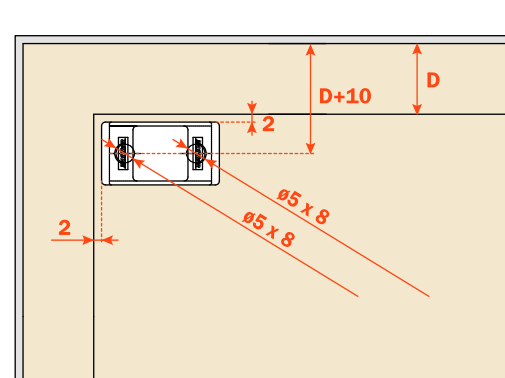
Fulloverlay door



D = Door overlay on side and top of the cabinet
Drilling distance of retaining catch = D + 8

Special assemblies

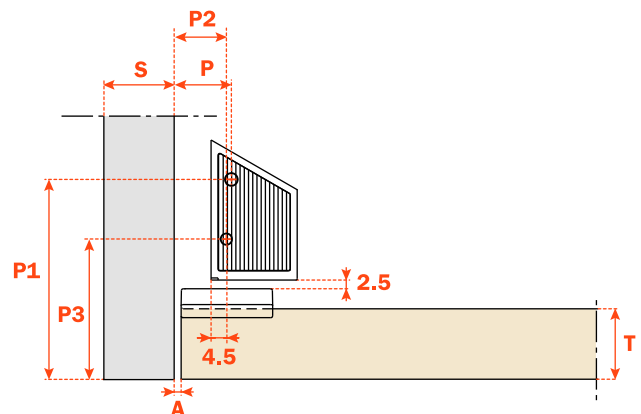
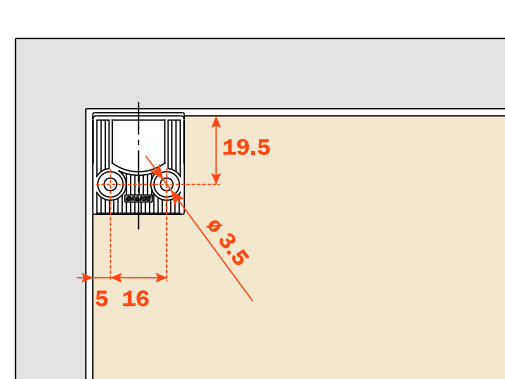
$$\begin{aligned}
 A &= X - D + 4.5 \\
 P &= X - D + 10.8 \\
 X \text{ min} &= D + 8 \\
 \\
 A &= 26 - 18 + 4.5 = 12.5 \\
 P &= 26 - 18 + 10.8 = 18.8 \\
 X \text{ min} &= 18 + 8 = 26
 \end{aligned}$$



D = Door overlay on side and top of the cabinet

Inset door

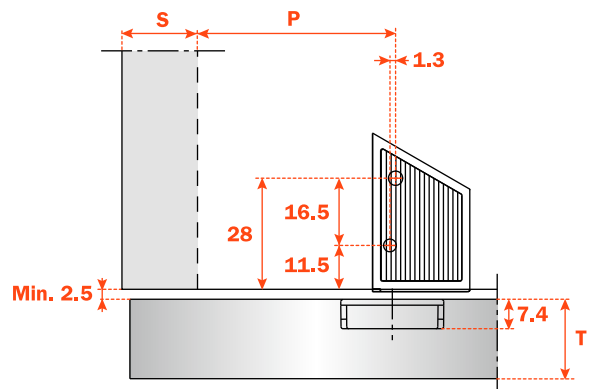
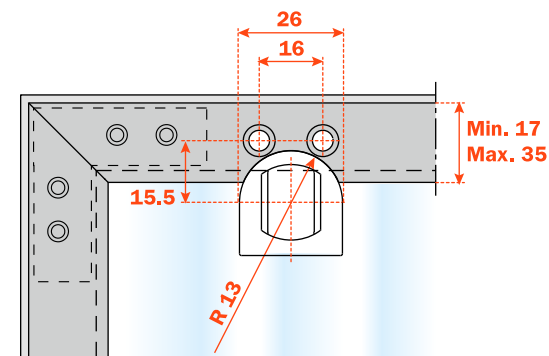
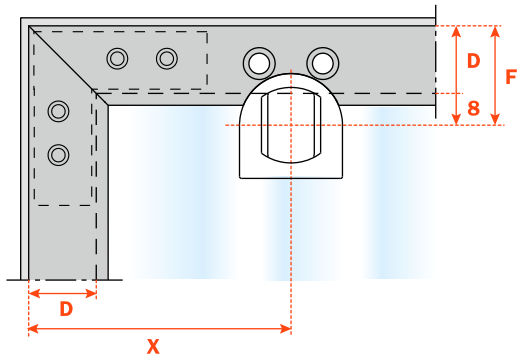
$$\begin{aligned}
 P &= 14.8 + A \\
 P1 &= 36.8 + T \\
 P2 &= P - 1.3 \\
 P3 &= P1 - 16.5
 \end{aligned}$$



Mechanical Push - Drilling for aluminium frame door

Profile min. 17 mm/max 35 mm

- D** = Door overlay on side and top of the cabinet
- F** = Drilling distance of retaining catch = $D + 8$
- X** = Relative to the distance to the corner of the profile
- P** = Fixing distance of PUSH = $X - D + 1.3$



Profile min. 35 mm/max. 45 mm

- D** = Door overlay on side and top of the cabinet
- F** = Drilling distance of retaining catch = $D + 8$
- X** = Relative to the distance to the corner of the profile
- P** = Fixing distance of PUSH = $X - D + 1.3$

